



# Crystal Nails®

2018/2019 WINTER EXTRA



15 years old



Crystal Nails®

# Contents

4



**New!** Gelly Cover  
Pink Builder Gel

8



**New!** Builder gel trial kits

9



**New!** Xtreme Fusion  
AcrylGel Thinner

10



**New!** Compact Base Gel  
Cover Rose

12



**New!** Stellar  
Top Gel

14



**New!** Stamping  
Color Gel

18



**New!** 3 STEP CrystaLac  
colors

20



**New!** ONE STEP CrystaLac  
colors

22



**New!** Royal Gel  
colors

24



Base and top coats

26



**NEW! Kits**

30



Other Crystal coming outs

40



Our educators' favorites

42



Trend colours of the winters  
2018/2019



NEW



GELLY COVER PINK BUILDER GEL

# NEW!

## GELLY Cover Pink Builder Gel

### COVER PINK

**NEW CATEGORY BETWEEN THE COVER REFILL AND XTREME FUSION  
PRODUCT FAMILY**

**COVER GEL WHAT PROVIDES A PERFECT COVERAGE. IT CAN BE APPLIED ON WHOLE NAIL OR FOR NAILBED  
EXTENSION. THE MATERIAL IS PERFECTLY HOMOGEN SO THE NAILS WON'T BE MOTTLED OR TRANSPARENT. IN ONE  
STEP YOU CAN MAKE THE HEIGHTENING AND NAIL BED EXTENSION.**

Thanks to its new „pudding“ texture the material stays where we put (not self-leveling) and easy to apply because it's not runny. the desired form/curve can be made easily. This gel is the perfect choice for making high smile line wall thanks to its shape holding feature. At refilling or sculpting process we can put on the material all the five fingers so we can save time. Thanks to its perfect adhesion it won't be airy under the nails. Not so flexible but it is stronger and does not break.

5ml –  
15ml –  
50ml –

Density: ● ● ● ● ●

NEW „PUDDING  
„TEXTURE  
COOL FORMULA

IT DOES NOT BREAK



**Cover Pink**  
5ml, 15ml, 50ml



NEW



GELLY COVER PINK BUILDER GEL

Model: Rozina Lugosi ; Photo: Căbôr Dală; Make up: Anita Heizer; Hair: Balázs Dósa



**GELLY Cover Pink  
Builder Gel**

the nails on the picture  
made with the NEW Gelly-  
ly Cover Pink Builder Gel,  
Xtreme Clear gel and #1  
Crystal Flake (Alexandra  
Méhész)



„YOU CAN FIND A  
STEP BY STEP ON  
THE NEXT PAGE OF  
THE GELLY COVER  
PINK GEL

NEW



GELLY COVER PINK BUILDER GEL

## How to use the GELLY Cover Pink Builder Gel:

Suggested to apply a base gel

(Eg: Compact Base Gel Translucent Nude)

Suggested to use the new Gelly brush or another soft brush (Nero Merlo).

At nail sculpting if you would like to bend the material, suggested to apply Gelly Cover Pink Builder Gel or other flexible base gel in a thin layer and cure in lamp (Gelly Cover Builder Gel: 20 secs, Xtreme Clear 10 secs, Xtreme Cool Gel: 15 secs) The second step is covering the basic layer with the Gelly Cover Builder Gel (don't have to bend it).

The Whole cure time in UV lamp: 2-3 mins, in LED lamp: 1-2 mins.

The perfectly smooth surface can be reached with filing only, because this new material is not self-leveling. ( Easy to file with 180 Xtreme green file).

NEW! Gelly Cover Pink Builder Gel **NEW!**

# Step by Step

## GELLY Cover Pink Builder Gel

by Alexandra Mész

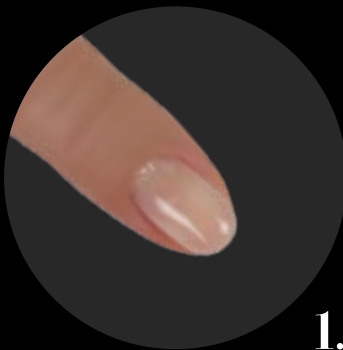
- (1.) Prepare the nails with the professional 150/150 (blue) file and apply Compact Base Gel Clear as a basic layer.
- (2.) Build the free-edge with Xtreme Clear Gel (Xtreme butterfly nail form) and use Nero Merlo brush II. After 10 secs bend the nails and apply C-curve holder and cure the nails for 2 minutes in LED lamp.
- (3.) Build the whole nail bed with Gelly Cover Builder Gel and use the new Gelly brush. Cure the nails for 2 mins. Then cleanse them and file the smile line with 150/150 (blue) and surface with 180/180 (green) file.
- (4.) Apply Builder White II. white gel with Nero Merlo II. brush then cure the nails for 2 mins in LED lamp.
- (5.) File the nails with the Xtreme green 180 and matte with pink buffer.
- (6.) Cover the nails with Cool Top Gel.



NEW



GELLY COVER PINK BUILDER GEL



1.



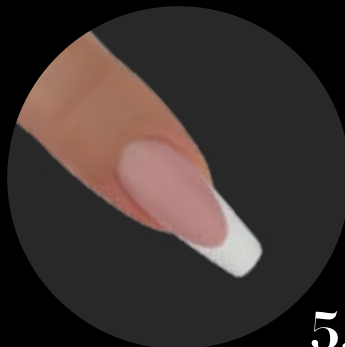
2.



3.



4.



5.



6.



NEW



BUILDER GEL TRIAL KITS

# NEW! BUILDER GEL TRIAL KITS

The most popular builder gels in a smaller pack to try them on a favourable price. The Taste Kit! could be the perfect choice if you would like to try something new. „Taste“ and find your favourite!

## 1. NEW! **Clear** Builder Gel Taste Kit

Xtreme  
Clear

Cool  
Gel

Titanium  
Gel

3x  
3ml

## 2. NEW! **Cover Pink** Builder Gel Taste Kit

Xtreme  
Cover Pink

Cover  
Pink

Rocky Cover  
Light

3x  
3ml

## 3. NEW! **Cover Refill** Builder Gel Taste Kit

Cover  
Refill

Cover Refill  
Hard

Cover Refill  
Hard Tan

3x  
3ml

NEW!

1.

NEW!

2.

NEW!

3.

FROM  
JANUARY!

NEW

XTREME FUSION ACRYLGEL THINNER

# NEW! XTREME FUSION ACRYLGEL THINNER

New revolution! This new additional liquid was developed for Xtreme Fusion AcrylGel. It does NOT dry the fur of the brush and it does NOT have an unpleasant smell like the liquid has. It makes the colors more vivid.

40ml –



**XTREME FUSION ACRYLGEL THINNER**  
The nails on the picture made with Cover Pink, Clear, White and Transparent Pink Xtreme Fusion AcrylGel. (Edina Sikari)



NEW



COMPACT BASE GEL COVER ROSE

# NEW!

## COMPACT BASE GEL COVER ROSE

### NAIL STRENGTHENER AND BASE GEL

This shade suits for pale skin which is lighter than Cover Pink but a little bit warmer.

It is a new generation nail strengthener what is soluble, flexible and super dense, but easy to apply. It has a strong adhesion and it follows the shape of the nail. It can be applied for base making, nail strengthening, making the C-curve, nail correction and nail bed extension (with nail form)

4ml –

8ml –

**FASTER WORK:  
BASE MAKING AND NAIL  
STRENGTHENING OR  
NAIL BED EXTENSION,  
CORRECTION, MAKING  
C-CURVE IN ONE STEP**







#### COMPACT BASE GEL COVER ROSE

The nails on the pictures made with the NEW **Cover Rose Compact Base Gel**, the decoration made with the NEW **Silver Stamping Gel** and the NEW **Silver Stellar Top Gel** (by Alexandra Méhész)

**MORE DURABLE  
THAN EVER, EXTRA  
STRONG ADHESIVE  
BASE GEL AND NAIL  
STRENGTHENER!**

**SELF-LEVELING:  
ITS PERFECT SELF-  
LEVELING FEATURE  
CREATES A FLAWLESS  
SURFACE!**

#### How to use:

- Prepare the nails with **Spray Prep** or Nail Prep/No Buffer Scrub. No need to use Primer
- Apply color gel polish over the properly cured surface (Don't remove the thin tacky layer. It helps with applying the color more preciously)
- Compatible with all kind of CrystaLacs (Except: ONE STEP Easy CrystaLac)
- Using it as a base under ONE STEP CrystaLacs extends their durability similar to the 3 STEP CrystaLacs (up to 3 to 4 weeks)
- Features extreme adhesion hence perfect under hard gels too
- In case of sculpting- first remove the tacky layer then shape it like hard gels



NEW



COMPACT BASE GEL COVER ROSE

NEW

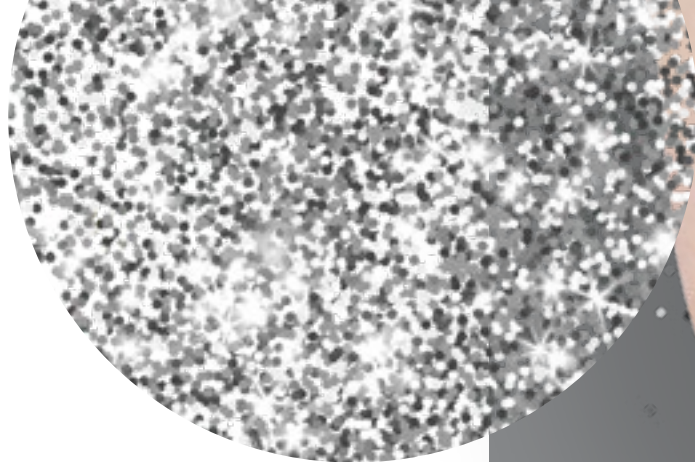


STELLAR TOP GEL

# NEW! STELLAR TOP GEL

You can make any kind of decor colors shimmery with the new Stellar Top Gel non-cleansing effect gel. It can be applied thicker or thinner (different effects)

4ml -



LIMITED  
EDITION

On the picture

On the picture

4ml

NEW!

NEW!



Gold



Silver



NEW



STELLAR TOP GEL



#### STELLAR Top Gel

The nails on the pictures made with **3S46 3 STEP CrystaLac**, the **NEW Silver Stellar Top Gel**, the **Elasticker silicone sticker** and **Swarovski kövekkel** rhinestones. (by Szilvia Balázs)



#### STELLAR Top Gel

The nails on the picture is made with **3S88-Ivory 3 STEP CrystaLac**, **3SFD1 Full Diamond CrystaLac**, the **NEW Gold Stellar Top Gel**, the **NEW Swarovski Winter Wonderland Snow Queen** rhinestones! and the **Rosegold Mini beads** (by Dóra Pásztor)



NEW

STAMPING COLOR GEL

# NEW!

## STAMPING COLOR GEL

**MAKE YOUR WORK EASIER WITH STAMPING COLOR GEL**

Non-cleansing, hyperpigmented stamping gels.

This gel's advantage is they cure in UV/LED lamp (not on air). Available in two basic (white and black) and two festive (golden and silver) colors. Soluble, so it can be practically applied on artificial nails and with gel polishes. Suggested to use top coat for a longlasting effect.

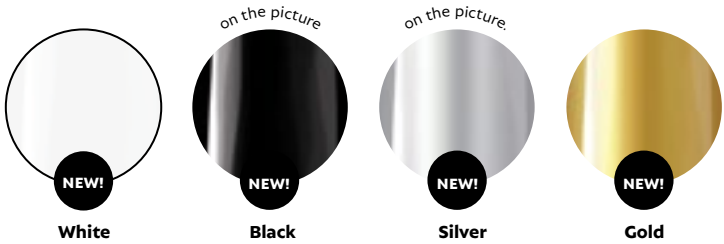
3ml –

USE TOP COAT FOR  
A LONGLASTING  
EFFECT

NEW!



3ml



White

Black

Silver

Gold

NEW



STAMPING COLOR GEL



#### STAMPING Color Gel

The nails on the picture made with **3S78 Snowwhite 3 STEP CrystaLac**, the **NEW Black Stamping Gel** and the **NEW Gold Stellar Top Gel** (by Virág Halász)



#### STAMPING Color Gel

The nails on the picture made with **3S12 Black 3 STEP CrystaLac**, the **NEW White Stamping Gel** and the **NEW Silver Stellar Top Gel**. (by Virág Halász)

NEW



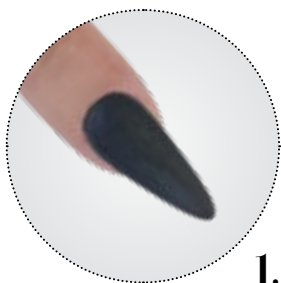
STAMPING COLOR GEL



# StepbyStep

## STAMPING COLOR GEL

by Virág Halász



1.



2.



3.



4.

(1.) Apply the buffer to matte the nails

(2.) Put on the pattern with the NEW White Stamping Color Gel and cure in LED for 1 min.

(3.) Put on the the second pattern and cure in lamp

(4.) Cover with Cool Top Gel Universal and cure in lamp.

## Stamping plate

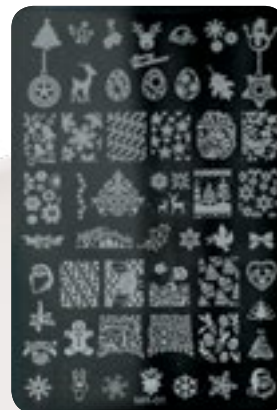
### Christmas and winter style

Two kinds of stamping plates. There are more than 40 (smaller and bigger- what covers the whole nail) patterns on it. Make wonderful Christmas nails.

/pcs



Xmas Spirit



Winter Tales



NEW



STAMPING COLOR GEL



NEW!

NEW



3 STEP CRYSTALAC

# NEW!

## 3 STEP CrystaLac

### TRENDCOLORS 2018/2019 WINTER

EXTRA LONGLASTING , WONDERFUL COLORS AND SPARKLING IN

#### 3 STEPS!

Make wonderful nails in winter time with the new shimmery shades of 3 Step CrystaLacs.

Wear the new 3S92 Champagne on last night of the year or choose the romantic 3S93 Burmese ruby. We suggest the 3S94 Mystic emerald and 3S95 Exciting blue for guests who would like darker shade.

4ml –

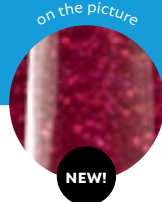
8ml –

THE BEST SOLUTION  
FOR LONGLASTING  
EFFECT

LASTS FOR 3 WEEKS  
PROFESSIONAL



**3S92**  
Champagne



**3S93**  
Burmese ruby



**3S94**  
Mystic emerald



**3S95**  
Exciting blue



NEW



3 STEP CRYSTALAC



### 3 STEP CRYSTALAC

Then nails on the picture is made with the **NEW 3S93 Burmese ruby 3 STEP CrystaLac**, the **NEW Winter Wonderland Snow Queen** rhinestones and the **3SFD1-Full Diamonds CrystaLac, Rosegold Swarovski rhinestones**. (by Dóra Kesztyűs)



### 3 STEP CRYSTALAC

A képen látható köröm az **ÚJ 3S94-es Misztikus smaragd 3 STEP CrystaLac**-kal, az **ÚJ 3S95-ös Izgalmas kékség 3 STEP CrystaLac**-kal és a **Silver Mini szórógyönggyökkel** készült. (Balázs Szilvia munkája)



NEW



ONE STEP CRYSTALAC

# NEW!

## ONE STEP CrystalLac

### TRENDCOLORS 2018/2019 WINTER

NON-CLEANSING, FAST GEL LACQUERING WITH VIVID COLORS

Winter shine with new shades of ONE STEP CrystalLacs. Choose the the new 1S68 First snowfall, 1S69 Bohemian emerald or 1S70 Luxurious sapphire for the New Year's Eve.

4ml –

8ml –

APPLY SUPER SHINE  
OPTIC TO RAISE  
THE SHINE OF YOUR  
CRYSTALACS.

ONE STEP! NO NEED TO  
APPLY BASE AND TOP COAT

NON-CLEANSING

BETTER SOLUBILITY

APPLY COMPACT BASE GEL  
TO ACHIEVE THE SAME  
LONGLASTING EFFECT THAN  
3 STEP CRYSTALAC



**1S68**  
First snowfall



**1S69**  
Bohemian  
emerald



**1S70**  
Luxurious  
sapphire





NEW



ONE STEP CRYSTALAC



#### ONE STEP CRYSTALAC

The nails on the picture made with the NEW **1S68 First snowfall ONE STEP Crystalac**, the NEW **1S70 Luxurious sapphire ONE STEP Crystalac** and **Swarovski rhinestones**.  
( by Dóra Kesztyűs).



#### ONE STEP CRYSTALAC

The nails on the picture made with the NEW **Gelly Cover Pink Builder Gel**, the NEW **3S94 Mystic emerald 3 STEP Crystalac**, the **1S69 Bohemian emerald ONE STEP Crystalac** and **Elasticker** (by Mária Koncsik-Király)

NEW

ROYAL GEL

# NEW!

## FULL DIAMOND

# ROYAL GEL

### TRENDCOLORS 2018/2019 WINTER

#### NON-CLEANSING COLOR GEL, ONE LAYER

Lovers of the non-cleansing gels will find their new favourites between the new Royal Gel colors.

The classic R130 Torrid red is indispensable in the course of the festive preparation. 3 shades of the year's trendcolors the R131 Purple rhapsody, the R132 Infinite sky and the R133 Night blue will be your guests' favourites.

We suggest to try the new R134 Pine green and R135 Shimmery onyx to.

4,5ml –

Try the new colors  
in 3ml pack!  
Limited edition!  
3ml –

NEW!



4,5ml



NEW!

**R130**  
Torrid red



NEW!

**R131**  
Purple rhapsody



NEW!

**R132**  
Infinite sky



NEW!

**R133**  
Night blue



NEW!

**R134**  
Pine green



NEW!

**R135**  
Shimmery onyx

On the picture.

On the picture.

NEW



ROYAL GEL



#### ROYAL GEL

The nails on the picture made with the **NEW R133 Night Blue Royal Gel**, the **NEW R135 Shimmery onyx Royal Gel**, **MattEver Matt Top Gel** and the **Rosegold Mini beads**.

(by Barbara Magyarosi)



#### ROYAL GEL

The nails on the picture made with the **NEW Gelly Cover Pink Builder Gel**, the **NEW R133 Night blue Royal Gel**, **Turquoise Glassy CrystaLac**, **Xtreme Transfer foil** and **Swarovski Winter Wonderland Snow Queen rhinestones**.

(by Melinda Drozdik)



NEW



UNIVERSAL AND CRYSTALAC BASE GELS

## UNIVERSAL BASE GELS



**COMPACT BASE GEL**  
New generation of base gel  
and nail strengthener

Soak-off, flexible and super dense nail strengthener gel, it's self-leveling and creates smooth surface. Despite its high density, it's easy to work with. Features very strong adhesion thus perfect for a base layer. Enhances the durability of the nail strengthener but also could be used for creating the C-curve, fixing chipped nails for sculpting nail extensions using nail forms.

**Cure time in the  
UV lamp: 2-3 mins,  
in LED: 1-2 mins.**

4ml –  
8ml –  
\*13ml –

*\*Only Clear is  
available in 13ml.*



**COVER LIGHTPINK  
BASE GEL**  
Colored base gel in paler  
pink shade

Unique developed, colored, flexible, easy to soak off, paler pink shade version of Cover Pink Base Gel. Like Cover Pink Base Gel, it's extremely easy to handle, it can be spread easily on the nail surface. In paler pink shade, less pigmented than Cover Pink Base Gel.

**Cure time in the  
UV lamp: 2-3 mins,  
in LED: 1-2 mins..**

4ml –  
8ml –



**COVER PINK  
BASE GEL**  
Colored base gel

Unique development! Colored, flexible, soak off base gel with good adhesion. Its color is identical with the most popular Cover Pink color. It is extremely easy to handle, it can be spread easily on the nail surface. A slightly sticky layer remains on the surface. Easy to soak off, the soak off time of a nail created with this: approx. 8 mins.

**Cure time in the  
UV lamp: 2-3 mins,  
in LED: 1-2 mins.**

4ml –  
8ml –



**BASE GEL**

Soak off, provides an extreme adhesion for 3 STEP CrystaLacs. Use it in a thin layer for the perfect adhesion and better soak off effect.

**Cure time in the  
UV lamp: 2-3 mins,  
in LED: 1-2 mins.**

4ml –  
8ml –  
15ml –



**COLOR UP! BASE GEL**  
"Color tuning" under  
3 STEP CrystaLac

Softer, white, flexible, strong adhesion base gel, especially under 3 STEP CrystaLac gel polish. Soaks off perfectly. Easy to handle. Use it thinly, in one layer. It easy to apply with the soft brush. If applied under the STEP CrystaLac it, gives extra vivacity to the applied colors.

**Cure time in the  
UV lamp: 2-3 mins,  
in LED: 1-2 mins.**

4ml –  
8ml –



**BUILDER BASE GEL**  
The strongest  
adhesion CN base gel

Incredible strength of adhesion, new development: say goodbye to adhesion problems even in case of the most problematic clients. Easy to apply, a bit more dense, the shorter brush makes your work more even. Apply under CrystaLac, but in this case the solubility will decrease, because of the stronger adhesion.

**Cure time in the  
UV lamp: 2-3 mins,  
in LED: 1-2 mins.**

4ml –  
15ml –

## UNIVERSAL TOP GELS

## ONE STEP CRYSTALAC TOP GELS

## 3 STEP CRYSTALAC TOP GEL

NEW



UNIVERSAL AND CRYSTALAC BASE GELS



**EASY OFF TOP GEL**

The final layer of 3 STEP CrystalLacs, soluble, flexible, durable and super shiny. By using this, Crystalacs get a long lasting shine. Use thinly for better solubility.

**Cure time in the  
UV lamp: 2-3 mins,  
in LED: 1-2 mins.**

15ml –



**MATTEVER MATTE TOP GEL  
NON-CLEANSING, SOAK  
OFF MATTE TOP GEL**

With this non-cleansing, soak off, flexible matte top gel you will be able to obtain a longer lasting matte effect than ever before. You can use it over gel polishes, hard gels and acrylic as well. Its non-cleansing property offers a new way to decorate/design with it. Cure it nail by nail.

**Cure time in the  
UV lamp: 2-3 mins,  
in LED: 1-2 mins.**

4ml –  
8ml –  
13ml –



**COOL TOP GEL UNIVERSAL  
Cleansing-free, soak-off  
super shine**

Cleansing-free, soak-off, medium viscosity, transparent top coat that keeps its spectacular shine for weeks. Non-yellowing. Does not require cleansing after curing. Perfect for acrylic and gel nails and 3 Step and One Step CrystalLacs, as it does not give a blueish-purplish tint to darker shades.

**Cure time in the  
UV lamp: 2-3 mins,  
in LED: 1-2 mins.**

4ml –  
8ml –  
13ml –



**SUPER SHINE OPTIC  
NON CLEANSING, SOAK  
OFF SUPER SHINE**

No cleansing, flexible, soak off, clear shine gel with a brush. It has been developed to increase the durability and shine of the ONE STEP CrystalLacs. It has optical brightening effect, so it brightens the white and light colors, makes the darker colors more vivid.

**Cure time in the  
UV lamp: 2-3 mins,  
in LED: 1-2 mins.**

4ml –  
8ml –  
15ml –



**0 TOP ONE STEP CrystalLac  
Durable, flexible, soak off,  
cleansing free shine for  
CrystalLac!**

You can add an even more durable cover shine on your ONE STEP CrystalLacs. It will not come off or get matte. It protects the fragile natural nails like a transparent, shiny shield for 2-3 weeks. You do not even have to buff thanks to its strong adhesion ability (We recommend the New Soft Touch Buffer, it will not weaken the natural nail.

**Cure time in the  
UV lamp: 2-3 mins,  
in LED: 1-2 mins.**

3ml –  
8ml –



**CLEAR/TOP 0  
CRYSTALAC**

**CN tip:  
Do not overcure the 3 STEP  
CrystalLac, so the top can  
adhere perfectly!**

**Cure time in the  
UV lamp: 2-3 mins,  
in LED: 1-2 mins.**

4ml –  
8ml –  
15ml –

**BEST of**  
*Crystal Nails*

NEW



CHRISTMAS MIRACLE KITS

# NEW!

## CHRISTMAS MIRACLE kits

Amazing Christmas colours. They are essential for the festive spirit. Buy them in kits now!

FROM DECEMBER!

PERFECT FOR  
GIFT!

1. **NEW! CHRISTMAS MIRACLE**  
**3 STEP CrystaLac**  
kit

Kit contains:

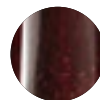
4x  
4ml



3S51



3S71



3S75



3S76

2. **NEW! CHRISTMAS MIRACLE**  
**ONE STEP CrystaLac**  
kit

Kit contains:

4x  
4ml



OS7



OS73



1S43



1S55

3. **NEW! CHRISTMAS MIRACLE**  
**Colour Gel**  
kit

Kit contains:

4x  
5ml



275



276



505



537

4. **NEW! CHRISTMAS MIRACLE**  
**Royal Gel**  
kit

Kit contains:

4x  
4,5ml



R11



R14



R77



R95





NEW!

3.

NEW!

1.

LIMITED  
EDITION!

NEW!

2.

NEW!

4.

NEW



FULL DIAMOND AND MOST WANTED! KITS

## NEW! FULL DIAMOND ROYAL GEL kit

Gorgeous glitter in a kit! These shiny glitters make your cold days festive.

1.

**NEW! FULLDIAMOND**

**Royal Gel**  
kit

Kit contains:

4x  
4,5ml



R93



R94



R133



R135

## NEW! MOST WANTED! BEST & TREND COLORS OF WINTER 2018/2019 kits

The most popular winter colours in one kit!

2.

**NEW! MOST WANTED! BEST & TREND COLORS OF  
WINTER 2018/2019**

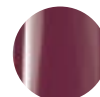
**3 STEP CrystaLac**  
kit

Kit contains:

4x  
4ml



3S8



3S55



3S92



3S95

3.

**NEW! MOST WANTED! BEST & TREND COLORS OF  
WINTER 2018/2019**

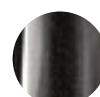
**ONE STEP CrystaLac**  
kit

Kit contains:

4x  
4ml



1S41



1S42



1S68



1S70

4.

**NEW! MOST WANTED! BEST & TREND COLORS OF  
WINTER 2018/2019**

**Colour Gel**  
kit

Kit contains:

4x  
5ml



129



520



540



557

5.

**NEW! MOST WANTED! BEST & TREND COLORS OF  
WINTER 2018/2019**

**Royal Gel**  
kit

Kit contains:

4x  
4,5ml



R76



R80



R130



R131





NEW!

1.

NEW!

4.

NEW!

5.

NEW!

3.

NEW!

2.

NEW



FULL DIAMOND AND MOST WANTED! KITS



NEW

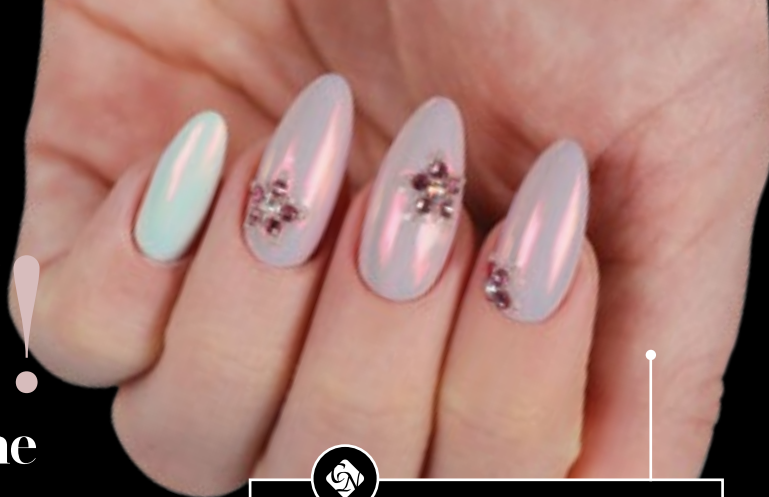


OTHER CRYSTAL COMING OUTS

# NEW!

## ChroMirror chrome Pigmentpowder – Aurora Pink

Aurora Pink Powder is now on the market! It is a child of ChroMirror Pigment powder family. Aurora Pink Powder is shiny, has breathtaking effect on every color! You can get it in decorated black jar.



ChroMirror chrome pigmentpowder

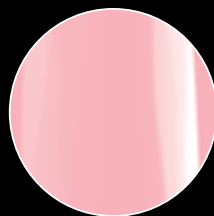
The nail on the picture made with the new **Gelly Cover Pink Builder Gel** pudding gel, the decoration comes with the new **Aurora Pink ChroMirror chrome pigmentpowder** and **Swarovski Winter Wonderland Holiday Treat** rhinestones (by Alexandra Mész).

### CN TIP:

On the surface of **ChroMirror chrome pigmentpowder** put top coat on it then Acid-Free Primer. Cover it with **Cool Top Gel Universal** in 2 layers.

ÚJ!

Curing time depends on the strenghen of the bulbs and lamp.



R4 Royal Gel



R6 Royal Gel



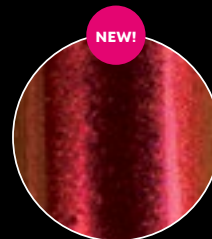
R7 Royal Gel



Aurora Pink  
on R4 Royal Gel base



Aurora Pink  
on R6 Royal Gel base



Aurora Pink  
on R7 Royal Gel base

# NEW!

## SWAROVSKI WINTER WONDERLAND COLLECTION

Impress your guests with these lovely collections!  
5x20 pcs different Swarovski rhinestones in a jar (100 pcs/jar)  
Limited Edition!



### SWAROVSKI WINTER WONDERLAND COLLECTION

The nail on the picture made with **Compact Base Gel, 3S90 Diplomatic blue, 3 STEP Crystalac**, for decoration we used the new **Swarovski Winter Wonderland Snow Queen** rhinestones (by Dóra Pásztor).



NEW



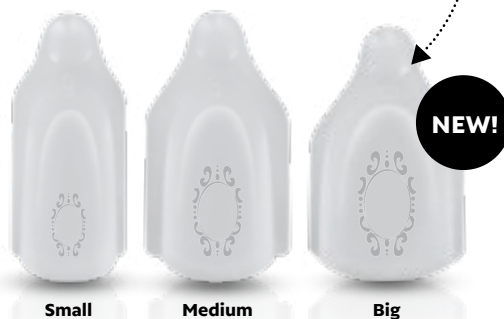
OTHER CRYSTAL COMING OUTS

# NEW!

## SILICONE ART DESIGN



**Silicone Art Design** practically a 3D STAMP, with it you can easily create cambered decoration. You can use almost with all the colourful materials like: **3 STEP, ONE STEP CrystaLac, Royal Gel, RoyalCream, 3D gel, Colour gels and also Xtreme Fusion AcrylGel.** Fill with colourful materials the silicon stamp model, remove the surplus with **Cleanser Pad.** Cure it around half a minute then apply Clear Builder Gel or **Clear Xtreme Fusion AcrylGel** on a thin layer. **You can fix onto the nails with tweezer then cure it.** Use TopShine on the nail but don't put any on the pattern.  
**3 sizes in a box with 6 different patterns.**



# NEW!

## CN SILICONE ART DESIGN TWEEZER







# Step by Step

## FOR SILICONE MODELS

BY Mónica Majnik

- (1.) Use **R134 Pine Green Royal Gel** in 2 layers. Cure it for 60 seconds after each layer in LED lamp.
- (2.) Prepare the **Silicone Art Design** model and the **Silicone Art Design** tweezer.
- (3.) With **Cleanser Pad** clean the **Silicone Art Design** model then I fill it up with number 12 **Golden RoyalCream**. Remove the surplus with **Cleanser Pad** then cure it for 30 sec in LED lamp.
- (4.) Use **Mini 3D brush** to put a thin layer of **Clear Xtreme Fusion Acrylgel** on the model. Attention! Do not cure it.
- (5.) Apply the pattern into **Silicone Art Design** tweezer, pay attention for the spikes to fit correctly.
- (6.) Apply **Silicone Art Design** pattern onto the nail and keep it on. Cure it 60 seconds in LED lamp. Remove the tweezer and the silicone then cure it for 30 seconds.
- (7.) Cover with a thin layer of **Cool Top Gel Universal**. Curing time: 60 sec in LED lamp.



1.



2.



3.



4.



5.



6.



7.

NEW



OTHER CRYSTAL COMING OUTS

## NEW! NAIL STICKER HOLDER ALBUM

Double-sided nail sticker holder album with unique design. Store your different sized nail stickers into it, even if the stickers are narrower, bigger or taller. Store your nail stamp plates into it, too! It helps the storage of your nail stickers for you and the choice for your guests. It's important to store the nail stickers with their own foils! **Size:** 21,5x19,5x3,5 cm.

FOR NAIL  
STICKERS AND NAIL  
STAMP PLATES

NEW!



## NEW! NAIL STICKERS

If you haven't got time for paint reindeers, mistletoes or snow flakes, our nail stickers are the best solution for you! Fasten your work in Christmas time! Available in bigger sheets, size: **10x8 and 12x7,5 cm. Extra thin stickers with winter designs.** The stickers perfectly fit for the nail surface and stick very strongly. For increase durability cover it with shine gel.

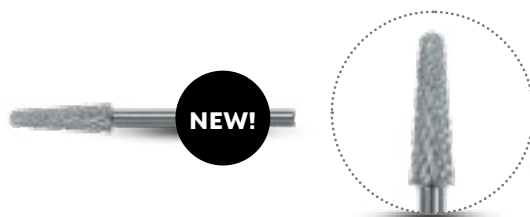


(by Dóra Doviscsák).



## NEW! EASY REFILL CARBIDE HEAD

Ideal for sculpting and filling gel, acrylic and acrylgel to filing the levels of cuticle area, the round head protects the skin from injuries. Ideal for remove strengthen gellac. Due to its ridging it's suitable for right and left-handed people, too.



## NEW! SCRIBBLE PEN

**READY, STEADY, SCRATCH!**

Your patterns can be born in new depths with our new scribble pen. Use it for more dense and harder materials, make marble patterns with one move or drop 1 or 2 drops **3 STEP or ONE STEP CrystaLac**.



## NEW! GELLY GEL BRUSH

Synthetic gel brush. Thanks to its softer, longer and flat fur, it is more easier to apply it. This brush is perfect for make the smile line and for royal and colors gels, and to cover the whole nails.



## NEW! COLORANT BRUSH SET

**BRUSHKIT FOR PIGMENTPOWDER**

With these synthetic brushes will be easy to applicate the pigmentpowder onto the nails. This kit contains 5 synthetic brushes.





NEW



OTHER CRYSTAL COMING OUTS

## NEW! CUTICLE OIL 1.

IN 2 WINTER FRAGRANCE

They are available in orange and apple-cinnamon aroma.

4ml -

## NEW! X-MAS FILE 2.

Surprise your guest with the new patterned files -size 150/180.

---

## NEW! ADVENT CALENDAR 3.

It is a superb Crystal Nails Advent Calendar. Why? Behind the windows you can not find chocolates but there are other Crystal Nail surprises :)

LIMITED  
EDITION!

NEW!

1.

NEW!

2.

NEW!



Crystal Nails



Merry  
CHRISTMAS



3.

NEW!

## NEW! LEDExtreme Party UV/LED lamp

Because the good effect of the music we decided to put speakers in your UV/LED lamp with inbuilt Bluetooth connection. Our aim was to make you and your guests happier. Parameters: 36 Watt; 21 UV/LED bulbs; motion sensor; magnetic mirror panel.

It has an inner magnetic mirror which guarantees the equable curing of the materials.



FROM DECEMBER

NEW!

Did you know facts about music:  
- makes you less stressful  
- makes you happier  
- helps to get a better result - simply makes you smile :)

## NEW! X1 Drill

Our new favourite is the new X1 Drill. It has good load capacity; back and reverse spinning; 0-30.000 rev and amazing price!



FROM  
DECEMBER

NEW!

NEW



OTHER CRYSTAL COMING OUTS

NEW



MOISTURISING HAND, FOOT AND BODY LOTION

# NEW!

## MOISTURISING HAND, FOOT AND BODY LOTION

IN 4 FRAGRANCE



**LEVENDULA (Lovely Lavender):** This lavender fragrance skincare cream contains Jojobaoil, cocobutter and vitamins; with extracts of rosemary, nettle and lingonberry. A and E vitamin help the dry skin keep hydrated and young.

**GRAPEFRUIT (Grapefruit Mania):** This pink grapefruit fragrance skincare cream contains Jojobaoil, cocobutter and vitamins; with extracts of rosemary, nettle and grapefruit. Grapefruit is perfect against spots. It keeps skin hydrated and balanced. .

**PAPAYA (Tropical Touch):** Papaya fragrance skincare cream contains Jojobaoil, cocobutter and vitamins; with extracts of rosemary, nettle and papaya. Papaya contains lots of A and C Vitamins plus is full of papain. Papain has protease which helps of the renewal of the skin.

**GUAVA (Nature Lover):** This „fresh-green“ fragrance skincare cream contains Jojobaoil, cocobutter and vitamins; with extracts of rosemary, nettle and guava. Guavas originated from Central America. Since the 1950s, guavas – particularly the leaves – have been studied for their constituents, potential biological properties and history in folk medicine. This fruit contains about four times the amount of vitamin C as an orange.



30 ml –

250 ml –

Display (12 pcs ; 30ml cream) –



NEW



MOISTURISING HAND, FOOT AND BODY LOTION



NEW



OUR EDUCATORS' FAVORITES

# OUR EDUCATORS' FAVORITES

We have just celebrated our 15 years B-Day. For this occasion we have collected the favorite products of our Crystal Nails educators. Here you can find some well-known iconic products like Cover Refill Hard Tan builder gel, but here there some of our newest products as Compact Base Gel. Let's have a look at the big „Must-Have” Crystal Nails list!



8

**Xtreme Drill 4**

Long-lasting life,  
perfect quality!

10

**3S78 SNOW-WHITE  
3 STEP CrystaLac**  
PROFESSIONAL SOLUTION!



3

**Glitter with  
mermaid powder #3**  
Maximum shine!



13

**Royal Gel 07**  
Non-cleansing colour  
gel in one layer!



15

**Acid-Free primer**  
Adhesive effect liquid



# 14

## XTREME BUTTERFLY FORM

Unique quality, strong adhesion, optimal curve and clear, visible scale.

**MattEver  
Matt Top Gel**  
Non-cleansing, soak  
off matte top gel.



# 11

## Xtreme Fusion AcrylGel – Cover Pink

In the most popular Cover Pink color. For bending should be applied in two layers, use the lamp between the layers, than pinch it.



# 12

## GigaLED desk lamp

Adjustable brightness. The head of the lamp can be twisted in 360 degrees laterally and in 180 degrees up and down.



# 4

**Compact Base  
Gel Clear**  
Nail strenghtener  
and base gel.



# 5

**Small cone  
carbide Bowl bit**  
For preparing manicure,  
pedicure and artificial



# 2

**Cover Refill Hard Tan**  
Dense, pinchable builder gel.



# 5

**Professional files  
150/150 (blue)**  
For shaping and tip filing.



# 1

**Cool Top Gel Universal**  
Non-cleansing, soakable supershine!

# 9



# 6

**0 SHORT BRUSH**  
Synthetic hair, very  
thin, for flexible gel  
decoration.



NEW



OUR EDUCATORS' FAVORITES



NEW




TREND COLOURS OF THE WINTER SEASON 2018/2019

TREND COLOURS OF THE WINTER

# EMERALD, SAPPHIRE & RUBY



  
Royal Gel  
On the picture the nail made  
with the new **R132 Infinity Sky**  
**Royal Gel** (BY Edina Sikari)

NEW



TREND COLOURS OF THE WINTER SEASON 2018/2019



Royal Gel

On the picture the nail made with the new  
**R130 Torrid red Royal Gel** (by Edina Sikari)



Royal Gel

On the picture the nail made with the new **R134-es Pine  
Green Royal Gel**. (by Edina Sikari)